



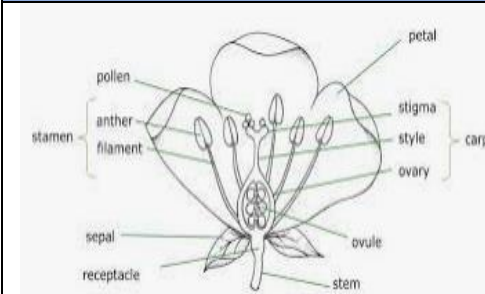
Plants

Year 3

Key Vocabulary

Flowering plants	plants that bear flowers and fruits
Roots	This part of the plant is mainly responsible for anchoring it down into the ground and absorbing the essential mineral elements, nutrients, and water from the soil. It is also used to store food.
Stem	The stem of the plant connects the roots to the leaves, helping to transport absorbed water and minerals to different parts of the plant.
Leaves	Leaves are the main (but not only) organ responsible for turning sunlight into food.
Flowers	Attract bees and wasps to gather the pollen to ensure the reproduction and survival of the plant species.
Air	to photosynthesize (make food) and to breathe
Light	Plants require this energy in order to grow, bloom and produce seed.
Water	Plants are about 80-95% water and need water for multiple reasons as they grow including for photosynthesis, for cooling, and to transport minerals and nutrients from the soil and into the plant.
Fertilisation	Pollen reaches the new flower and travels to the ovary where it fertilises egg cells (ovules) to make seeds.
Pollination	the act of transferring pollen grains from the male anther of a flower to the female stigma.
Seed dispersal	Dispersal is the means by which a plant ensures its seeds are spread as far as possible from the parent plant, to give the seeds the best chance of Germination.

Labelled diagram of a plant



Seed Dispersal



Key Knowledge

Light, air, water, nutrients from soil are important for plant growth.

Water and nutrients are absorbed through the plants roots.

Water and nutrients are passed through the stem.

Insects help pollinate flowers.

Seeds from plants can be dispersed by wind, water, birds and animals.

Paula Pryke is a famous British florist who studies plants. Someone who studies plants are called a botanist.

